

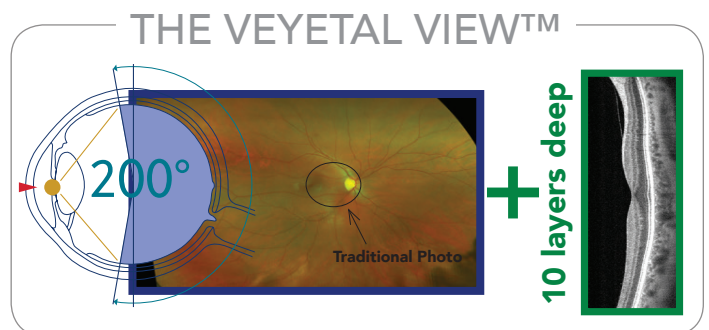
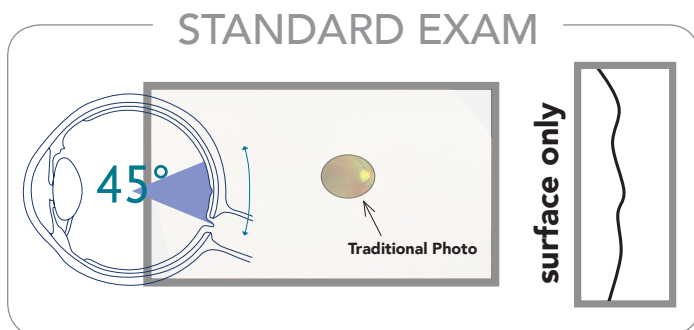


THE VEYETAL VIEW™ MAKES IT THAT EASY. Two easy steps can provide one of the most comprehensive evaluations of your eye health.

NO DROPS OR AIR PUFFS NEEDED. With no discomfort to you, your optometrist can now see your brain. That's right, your brain. The Veyetal View combines two powerful technologies to capture a panoramic image of your retina and an ultrasound of your macula—your brain.

EARLIEST DETECTION MEANS EARLIEST TREATMENT. The “brain” in your eyes gives clues and signs of vision threatening disease, which may otherwise provide no outward sign or symptom. This includes the earliest detection of eye diseases like glaucoma and macular degeneration, as well as other health threats such as early signs of diabetes, hypertension, multiple sclerosis, high cholesterol, stroke, hyperthyroidism, certain cancers, and many more.

TECHNOLOGY ADVANCES THE EXAM. Using these advanced technologies, the resulting image is more than 4 times greater than before, and doesn't stop at the surface, but extends 10 layers deep—into the critical tissues of the macula. It also creates a permanent record for comparison with future images.



CONVENIENT, COMFORTABLE, AND SAFE. For most regular patients without previously diagnosed eye disease, this new exam eliminates the need for dilation and those startling puffs of air, completely! The Veyetal View is pain free and non-invasive. Unlike common MRI or X-ray, there is no exposure to radiation. Advance your exam with the Veyetal View today by signing the informed consent on the other side of this page.

THE VEYETAL VIEW™



FOR YOUR SIGHT, YOUR VISION, AND YOUR HEALTH.

We take our role of protecting your sight and enabling your best vision very seriously. Our investment in this new technology ensures that we can provide you with superior care. Because your vision, health, and comfort are so important to us, the doctors of Northwest EyeCare Professionals strongly recommend the Veyetal View as part of your annual exam.

As an independent provider of care, Northwest EyeCare Professionals wants you to have the best options available when it comes to your health. We could limit services to the minimum that most insurers will cover, but we believe you deserve to set your own standards.

We understand that cost is always a consideration when making these choices. The Veyetal View is an additional charge that is not covered by most vision insurance or medical insurance. However, the Veyetal View may help to diagnose a medical condition, and then the appropriate tests and treatment would be covered by medical insurance.

We have made every effort to make these technologies affordable for you. By combining them in the Veyetal View and coordinating it as part of your regular visit, we can deliver these services as part of your total check-up at a single cost that is close to the amount others charge for just one of these advanced technologies.

The cost of the Veyetal View today is only \$49.00.

THE VEYETAL VIEW INFORMED CONSENT

To ensure that your doctor will have the results of your Veyetal View available at the time of your consultation, we need your consent before we begin. Making this decision prior to your exam ensures the most thorough evaluation in a single visit, without delay.

Because we have already seen the impact of the Veyetal View on the health of our patients, the doctors of Northwest EyeCare Professionals recommend all patients include the Veyetal View as part of their annual check-up. Checking the YES box below gets us started.

- YES, ADVANCE MY EXAM. I understand I am responsible for the additional fee not billable to insurance.
- NO, THANK YOU. I don't want to advance my exam at this time.
- MAYBE. I have questions that I would like to ask the doctor first.

Print Name: _____ Signature: _____